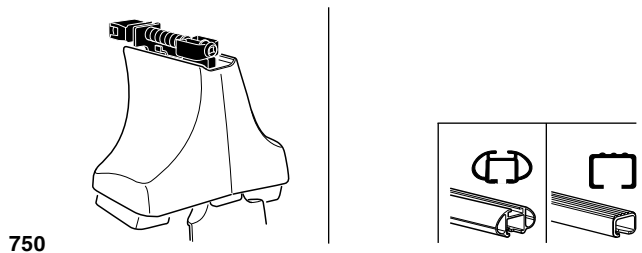
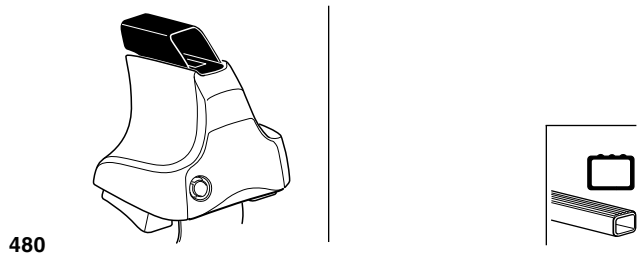
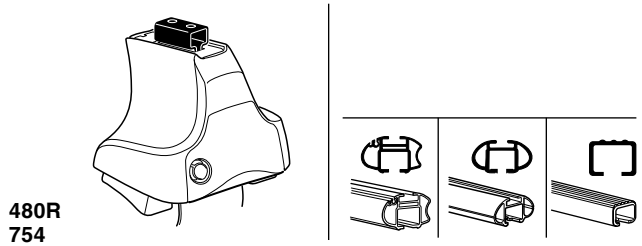


# Kit 1369

VOLVO V50, 5-dr Estate, 04-  
VOLVO V50, 5-dr Wagon, \*05-10

\*North America

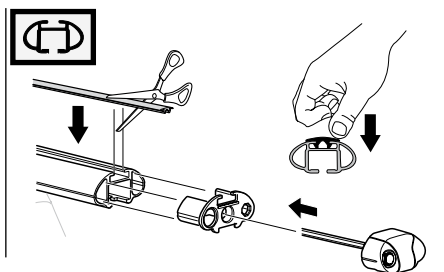
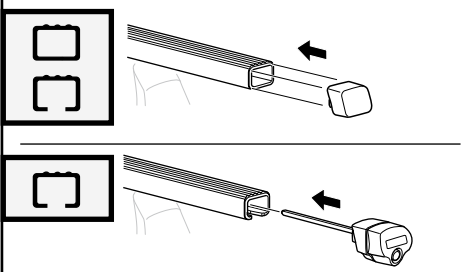
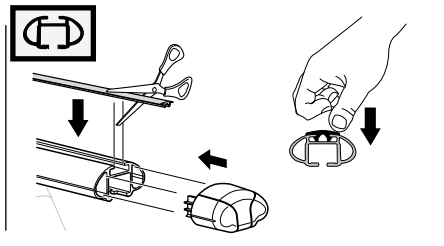
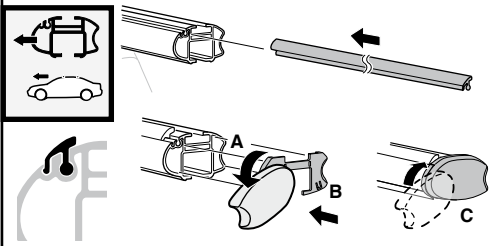
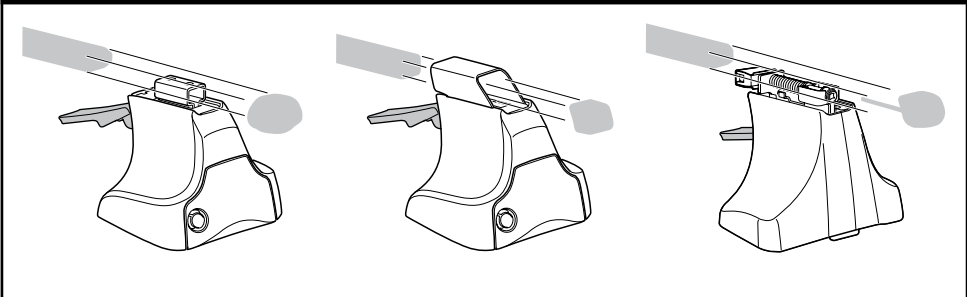
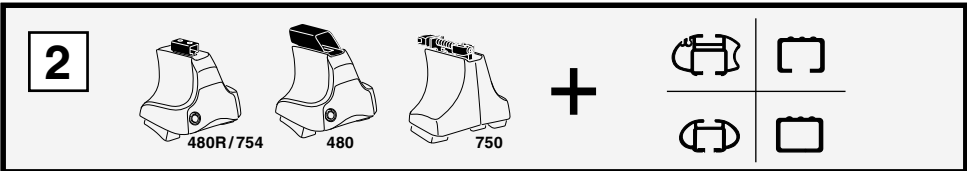
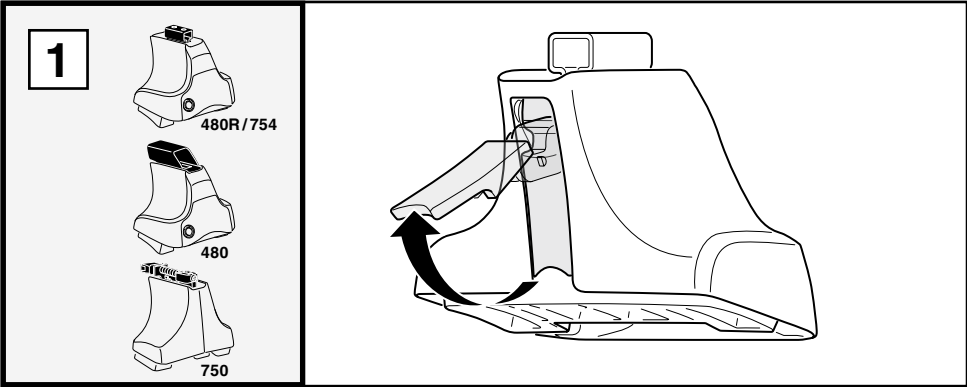


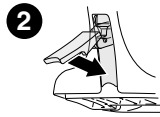
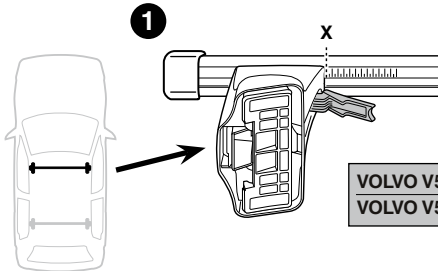
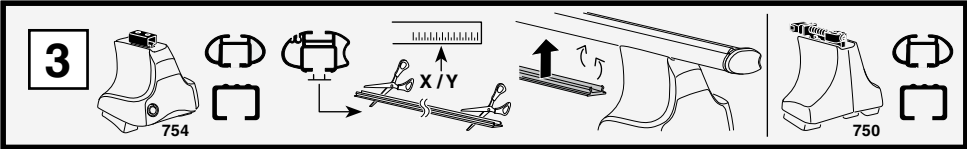
**Max. 75kg**  
**Max. 165 lbs**

- 2 x Rods
- 2 x Brackets
- 2 x Screws
- 4 x Nuts
- 2 x Rods
- 2 x Brackets
- 2 x Screws
- 4 x Screws
- 4 x Screws
- 2 x Rods
- 2 x Brackets
- 2 x Screws
- 2 x Rods
- 2 x Brackets

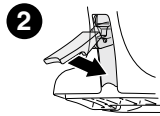
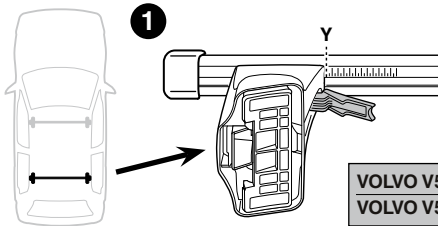
- 1 x Bracket 629
- 1 x Bracket 630
- 2 x Bracket 697
- 2 x Bracket 163
- 2 x Bracket 164
- 1 x Directional Pad

**Kit**

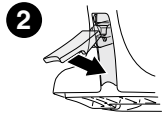
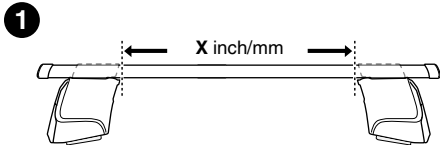
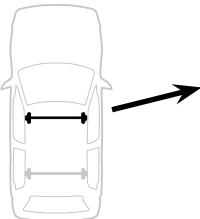
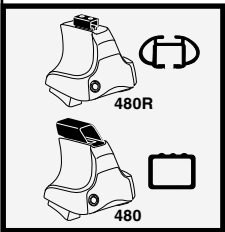




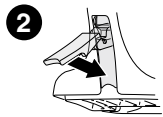
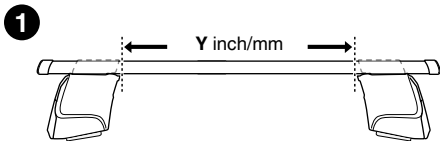
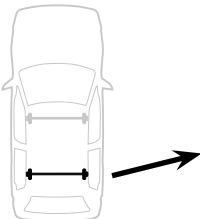
	X
VOLVO V50, 5-dr Estate, 04-	41
VOLVO V50, 5-dr Wagon, *05-10	41



	Y
VOLVO V50, 5-dr Estate, 04-	37
VOLVO V50, 5-dr Wagon, *05-10	37



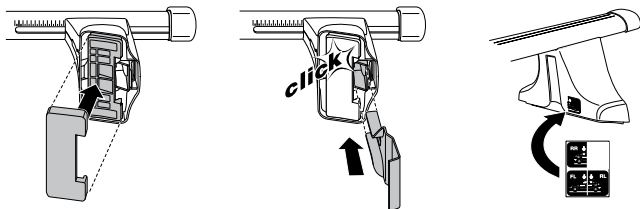
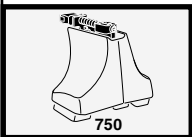
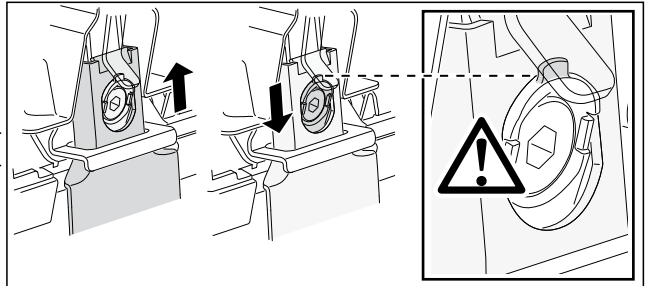
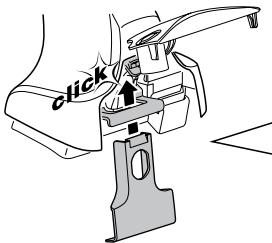
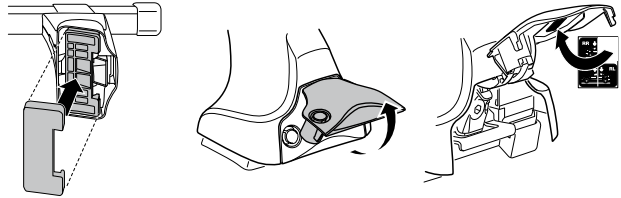
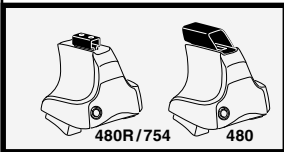
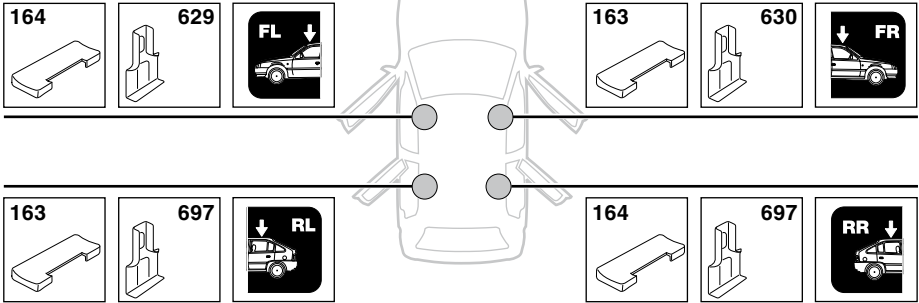
	X inch	X mm
VOLVO V50, 5-dr Estate, 04-	41 3/4"	1061 mm
VOLVO V50, 5-dr Wagon, *05-10	41 3/4"	1061 mm



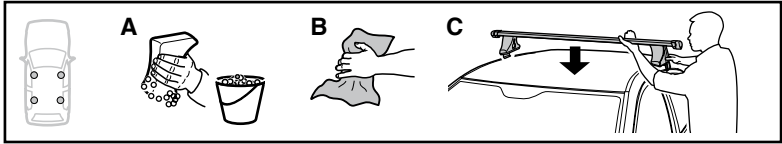
	Y inch	Y mm
VOLVO V50, 5-dr Estate, 04-	41 3/4"	1061 mm
VOLVO V50, 5-dr Wagon, *05-10	41 3/4"	1061 mm

4

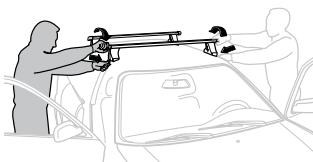
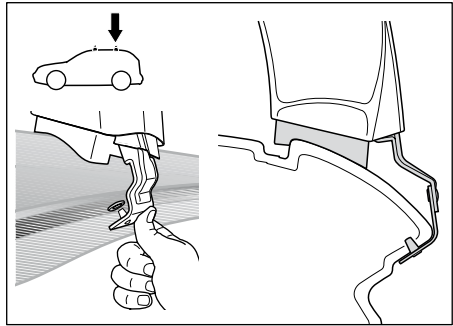
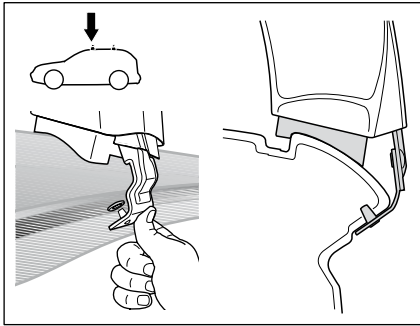
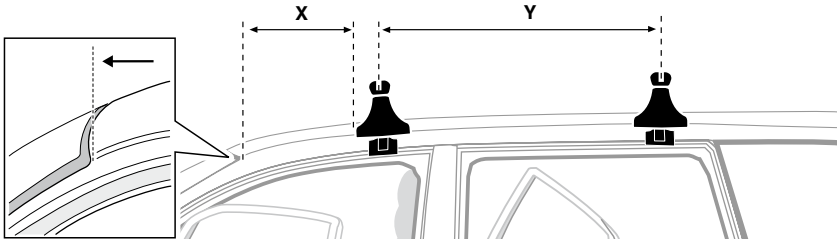
VOLVO V50, 5-dr Estate, 04-  
VOLVO V50, 5-dr Wagon, \*05-10



5



	X mm	Y mm	X inch	Y inch
VOLVO V50, 5-dr Estate, 04-	225 mm	800 mm	8 7/8"	31 1/2"
VOLVO V50, 5-dr Wagon, *05-10	225 mm	800 mm	8 7/8"	31 1/2"



GB/US

Tighten alternately  
 D Die Schrauben abwechselnd anziehen  
 F Serrer alternativement chaque côté  
 NL Afwisselend aan de linker- en de rechterkant aandraaien  
 I Alternare il serraggio delle viti  
 E Apertar alternativamente  
 PT Aperte alternadamente  
 S Dra åt växelvis  
 FIN Kierrä vuorotellen  
 EST Pinguldage vaheldumisi  
 LAT Pievelciēt pamišus  
 LIT Užsukinėkite pakaitomis  
 PL Śruby dokręcaj naprzemiennie  
 RU Затягивайте попеременно

CZ

Pokrétla bagazníka dokręcaj naprzemiennie.  
 SK Dofahujte striedavo  
 SLO Privijajte izmenično.  
 HR Naizmjenično zategniti  
 HU Egymástól függetlenül szorítandó  
 GR Σφιγγετε εναλλάξ  
 TR Dönüşümlü sıkın

中文

交替拧紧

한국어

번갈아 가며 조이십시오.

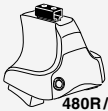
日本語

交互に締め付けてください。

ไทย

ขันในแบบสลับ

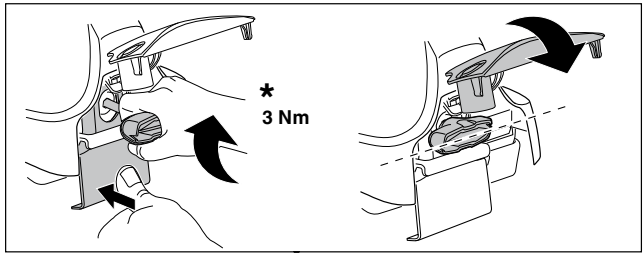
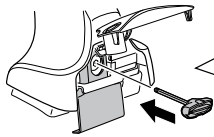
6



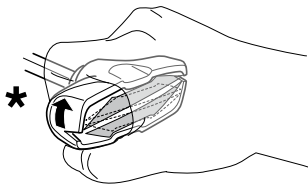
480R/754



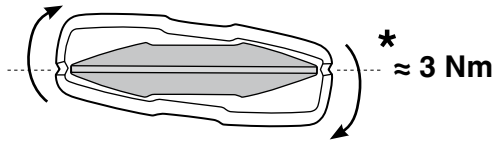
480



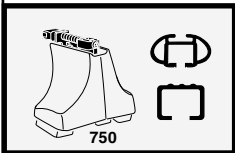
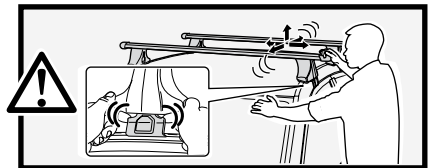
\*  
3 Nm



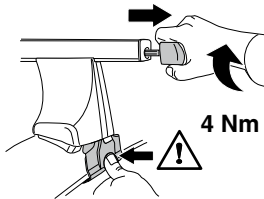
\*



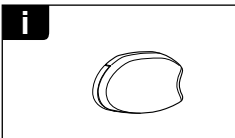
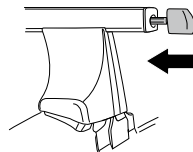
\*  
≈ 3 Nm



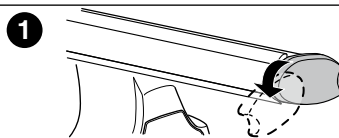
750



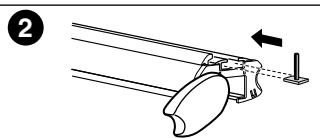
4 Nm



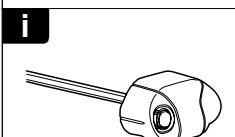
i



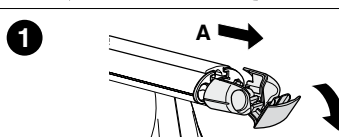
1



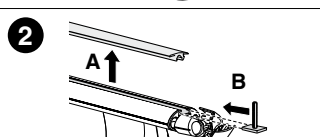
2



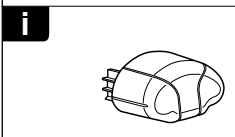
i



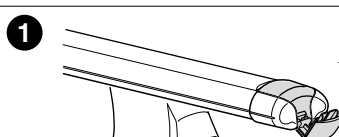
1



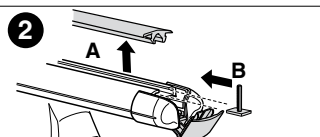
2



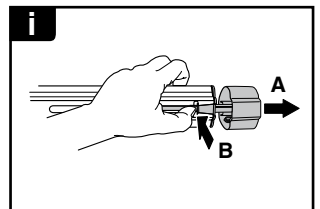
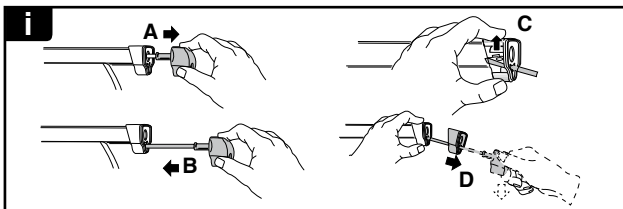
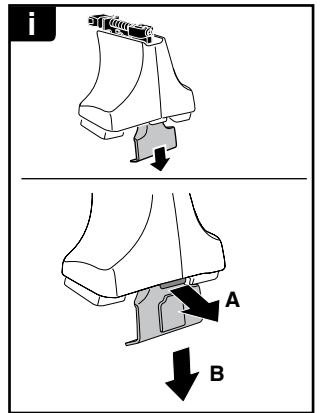
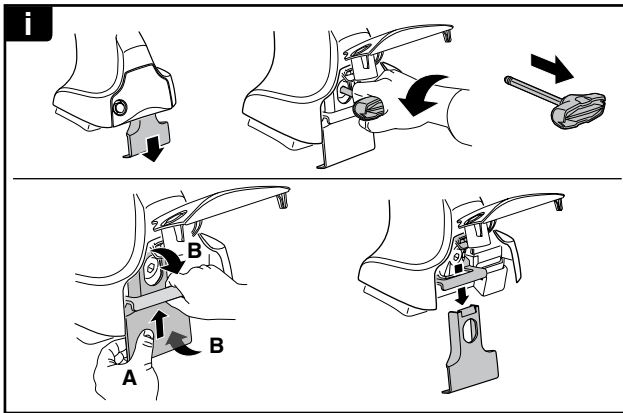
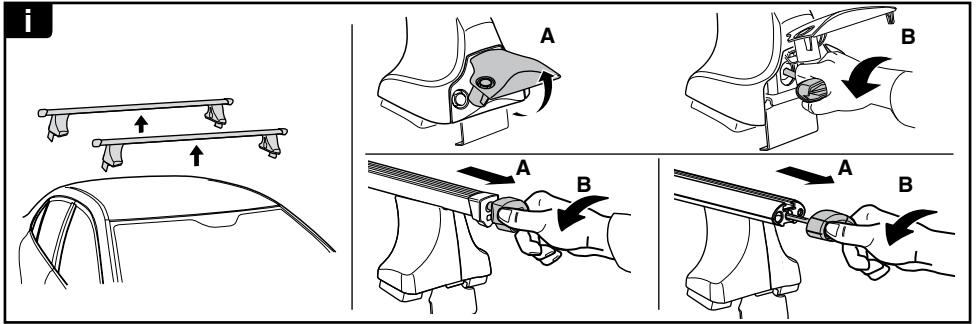
i



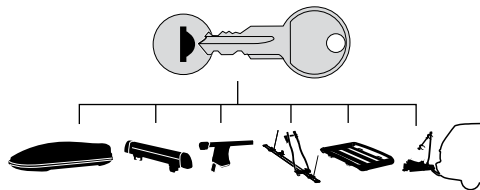
1




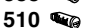
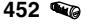


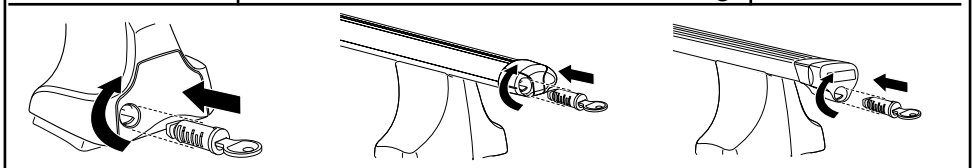
2



**THULE**  
SWEDEN  
**ONE  
KEY  
SYSTEM**



-  **544** (x4)
  -  **596** (x6)
  -  **588** (x8)
  -  **510** (x10)
  -  **452** (x12)
- NA  
EUR  
ASIA



WW ▶ Thule Sweden AB, Box 69, 330 33 Hillerstorp, SWEDEN  
NA ▶ Thule Inc., 42 Silvermine Road, Seymour, Connecticut 06483, USA

info@thule.com  
customer.service@thule.com

 www.thule.com

503-1369-02