

Kit 1462

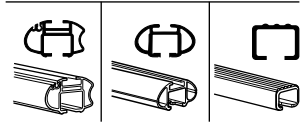
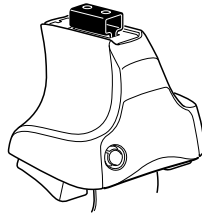
AUDI A4, 4-dr Sedan, 08- / *09-

AUDI RS4, 4-dr Sedan, *09-

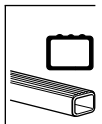
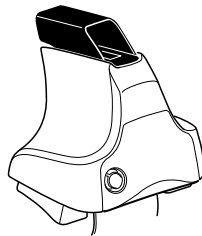
AUDI S4, 4-dr Sedan, *09-

*North America

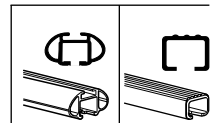
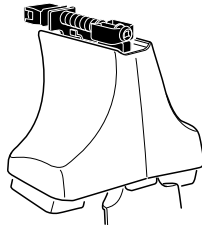
480R
754



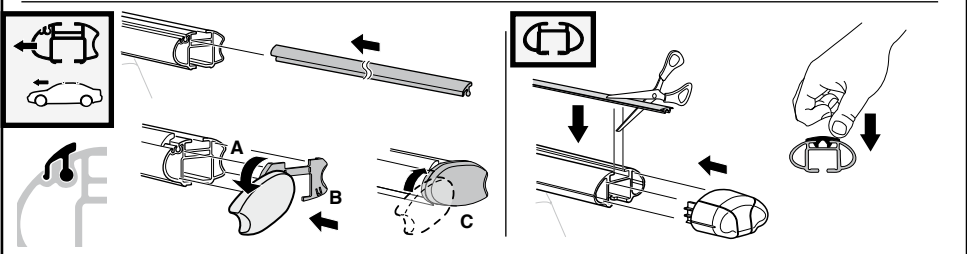
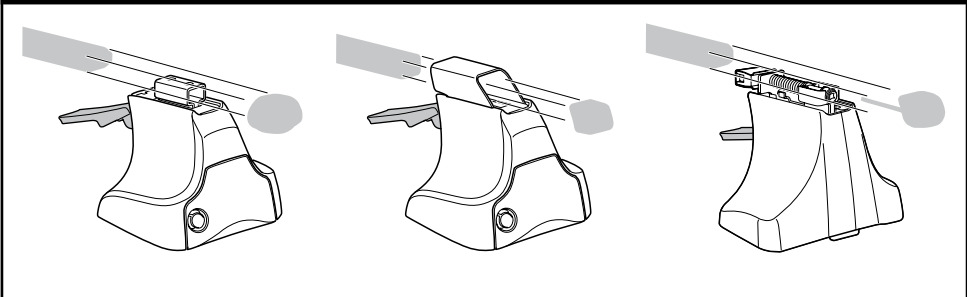
480

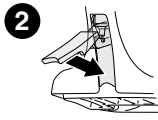
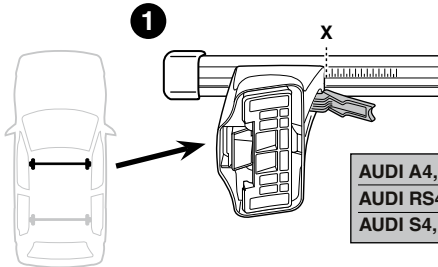


750

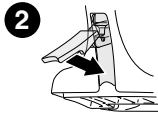
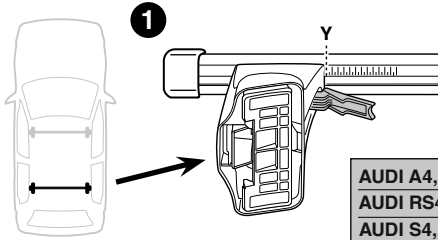


Kit

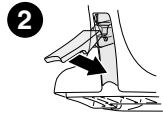
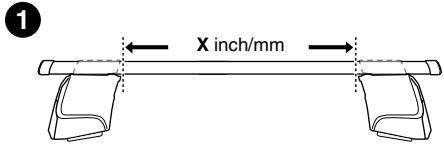
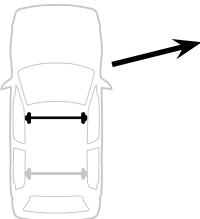
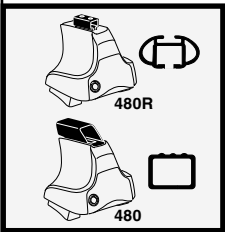




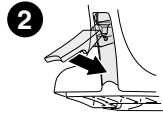
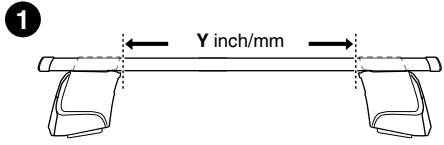
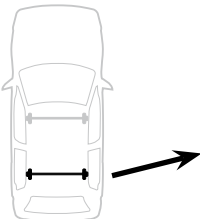
	X
AUDI A4, 4-dr Sedan, 08-	37
AUDI RS4, 4-dr Sedan, *09-	37
AUDI S4, 4-dr Sedan, *09-	37



	Y
AUDI A4, 4-dr Sedan, 08-	33,5
AUDI RS4, 4-dr Sedan, *09-	33,5
AUDI S4, 4-dr Sedan, *09-	33,5



	X inch	X mm
AUDI A4, 4-dr Sedan, 08-	40 1/4"	1021 mm
AUDI RS4, 4-dr Sedan, *09-	40 1/4"	1021 mm
AUDI S4, 4-dr Sedan, *09-	40 1/4"	1021 mm



	Y inch	Y mm
AUDI A4, 4-dr Sedan, 08-	38 7/8"	986 mm
AUDI RS4, 4-dr Sedan, *09-	38 7/8"	986 mm
AUDI S4, 4-dr Sedan, *09-	38 7/8"	986 mm

4

AUDI A4, 4-dr Sedan, 08- / *09-
AUDI RS4, 4-dr Sedan, *09-
AUDI S4, 4-dr Sedan, *09-

282



938



281



934



65



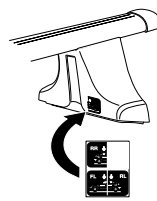
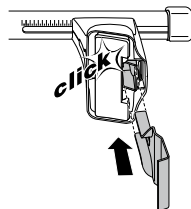
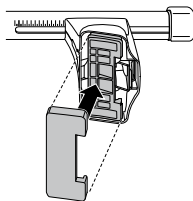
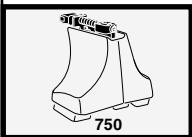
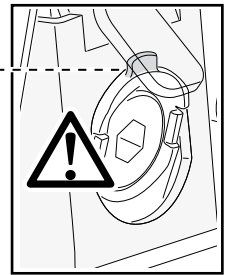
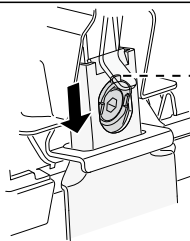
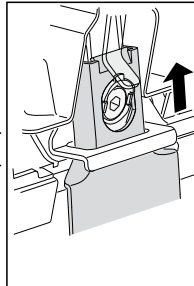
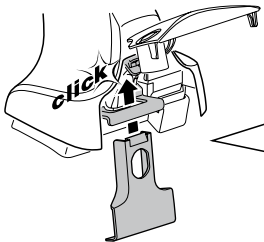
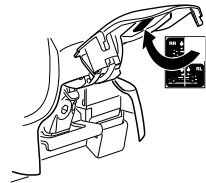
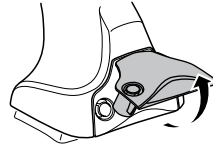
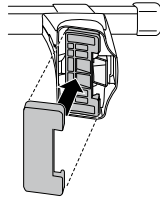
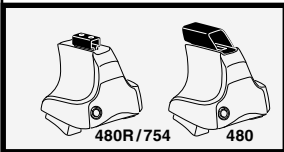
934



65



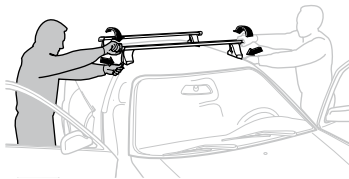
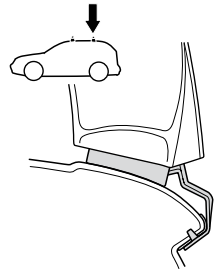
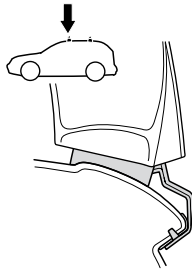
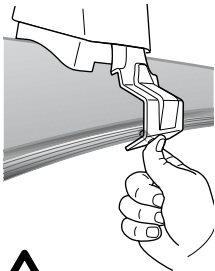
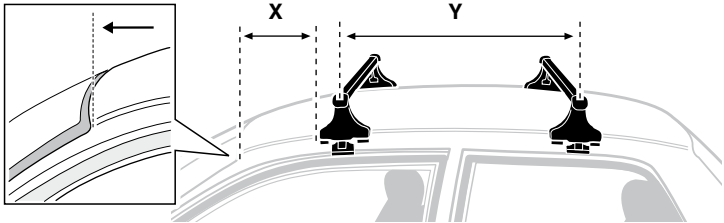
938



5



	X mm	Y mm	X inch	Y inch
AUDI A4, 4-dr Sedan, *08-	210 mm	760 mm	8 1/4"	29 7/8"
AUDI RS4, 4-dr Sedan, *09-	210 mm	760 mm	8 1/4"	29 7/8"
AUDI S4, 4-dr Sedan, *09-	210 mm	760 mm	8 1/4"	29 7/8"



GB/US Tighten alternately

D Die Schrauben abwechselnd anziehen

F Serrer alternativement chaque côté

NL Afwisselend aan de linker- en de rechterkant aandraaien

I Alternare il serraggio delle viti

E Serrare alternativamente

PT Aperte alternadamente

S Dra åt växelvis

FIN Kierrä vuorotellen

EST Pinguldage vaheldumisi

LAT Pievelciēt pamišus

LIT Užsukinėkite pakaitomis

PL Śruby dokręcaj naprzemiennie

RU Затягивайте попеременно

CZ Pokręťta багаžníka dokręcaj dokręcaj naprzemiennie.

SK Doťahujte striedavo

SLO Privijajte izmenično.

HR Naizmjenično zategnite

HU Egymástól függetlenül szorítandó

GR Σφιγγετε εναλλάξ

TR Dönüşümlü sıkın

中文 交替拧紧

한국어 번갈아 가며 조이십시오.

日本語 交互に締め付けてください。

ไทย ชันโนแบบสลับ

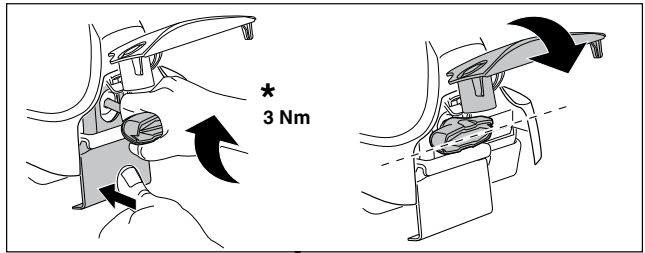
6



480R/754



480



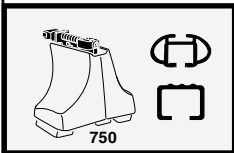
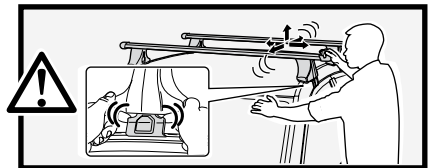
*
3 Nm



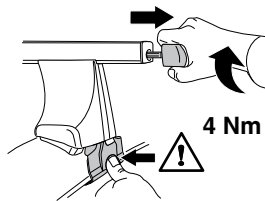
*



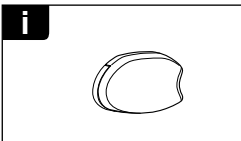
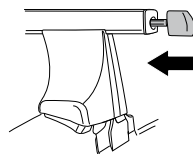
*
≈ 3 Nm



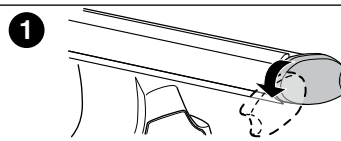
750



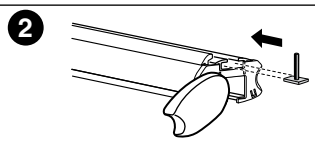
4 Nm



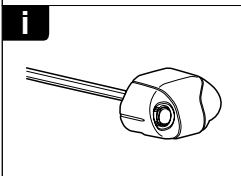
i



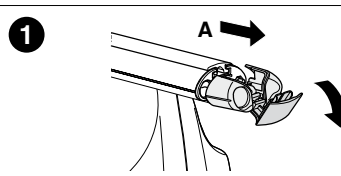
1



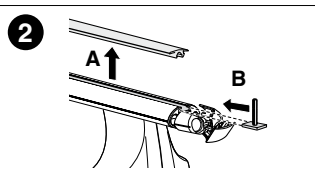
2



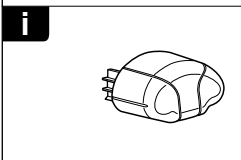
i



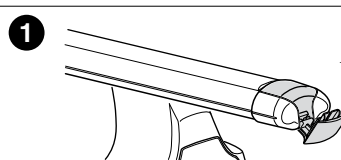
1



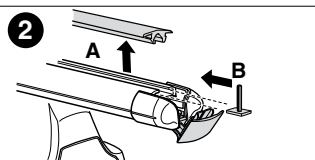
2



i



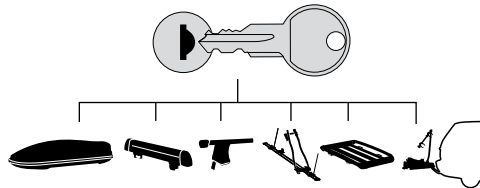
1



2



THULE
SWEDEN
**ONE
KEY
SYSTEM**



- 544 (x4)
- 596 (x6)
- 588 (x8)
- NA 510 (x10)
- EUR 452 (x12)
- ASIA

