

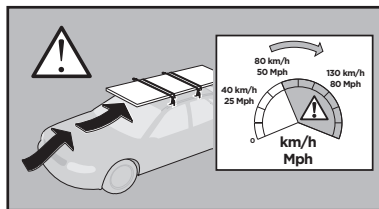
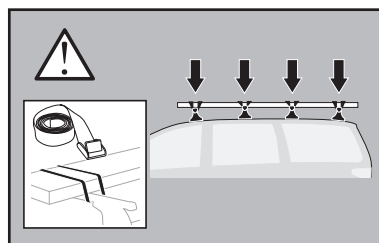
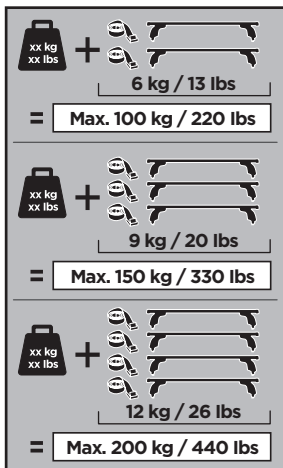
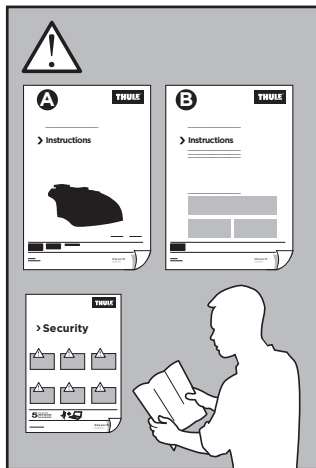


Thule XT Kit 3096

> Instructions

NISSAN Interstar, 4-dr Van, 10-
NISSAN NV400, 4-dr Van, 10-
OPEL Movano, 4-dr Van, 10-
RENAULT Master, 4-dr Van, 10-
VAUXHALL Movano, 4-dr Van, 10-

This kit is only for vehicles with fixpoint mounting.

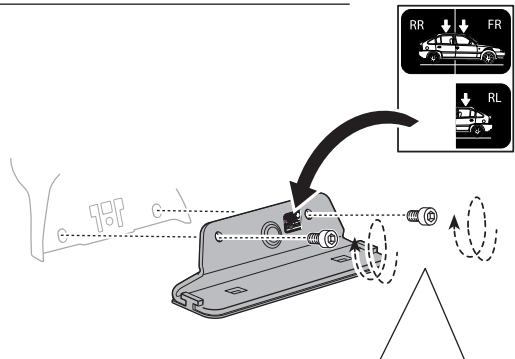
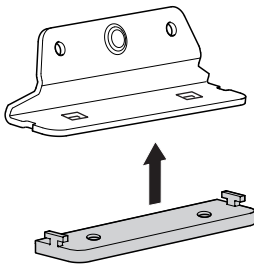
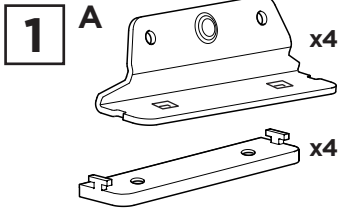
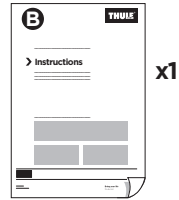
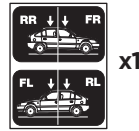
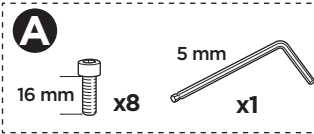
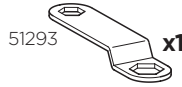
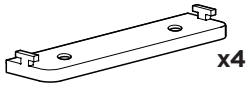
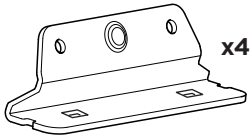


ISO 11154-E

183096

C.20130612
509-3096-02

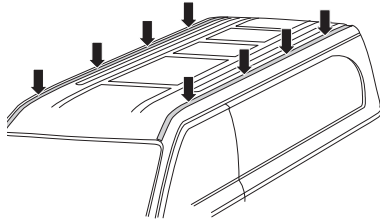
Bring your life
thule.com



EN Only a few turns
DE Nur wenige Umdrehungen
FR Quelques tours uniquement
NL Slechts enkele slagen
IT Solo qualche giro
ES Sólo algunas vueltas
PT Noções básicas
SV Endast några varv
DK Kun nogle få omdreinger
NE Bare noen få omdreinger
FI Vain muutama kierros

ET Ainult mõni pööre
LV Tikai daži apgriezieni
LT Tik keli pasukimai
PL Wystarczy kilka obrotów
RU Только несколько оборотов
UK Лише декілька обертів
BG Само няколко завъртания
CS Pouze několik otáček
SK Len niekoľko otáčok
SL Le nekaj obratov
HR/BiH Samo nekoliko okreta

RO Doar câteva rotiri
HU Csak néhány fordítás
EL Μόνο λίγες περιστροφές
TR Yalnızca birkaç tur
AR بعض دورات فقط
HE רק מספר סיבובים
ZH 仅几圈
JA 2〜3回転のみ
KO 몇 번만 돌리면 됨
TH เพียงสองสามรอบ

2**x4****x4****x4**

GB If there is an interior roof lining, remove it before starting the installation procedure.

D Vor Montagebeginn muß ggf. das Innendach gelöst werden.

F Si l'habitacle comporte un pavillon séparé, le déposer avant de commencer le montage.

NL Als er een binnendak aanwezig is, maak dit dan los voordat u met de montage begint.

I Rimuovere l'eventuale modanatura interna del tetto prima di iniziare la procedura di installazione.

E Si hay un techo interior, soltarlo antes de empezar el montaje.

S Om det finns ett inertak, lossa detta innan monteringen påbörjas.

FIN Jos autossa on sisäkatto, irrota se ennen asennuksen aloittamista.

EST Kui eksisteerib sisemine katusevooderdis, eemaldage see enne paigaldamise algust.

PL Przed rozpoczęciem montażu usuń ewentualną spodnią część dachu samochodu.

RU В случае наличия на крыше декоративных накладок, перед началом установки их необходимо снять

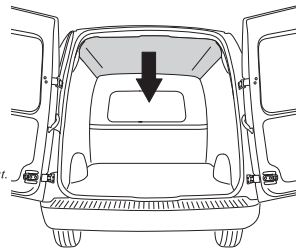
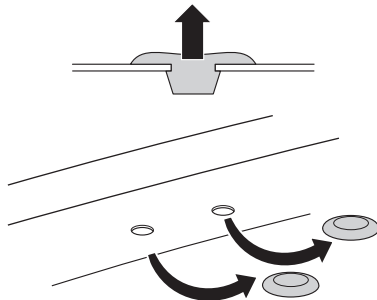
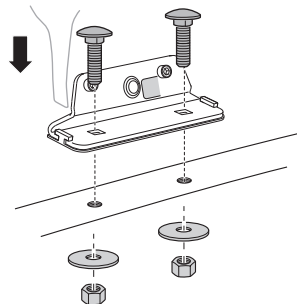
CZ V případě, že vozidlo je vybaveno vnitřním stropem musí být tento před montáží odmontován.

SLO Pred pritrdjevanjem odstranite notranjo strešno oblogo, če jo vozilo ima.

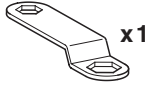
HU Abban az esetben ha a rögzítés helyén belső közvetélet található, azt a rögzítés előtt távolítsuk el.

한국어 내부 루프 라이닝이 있는 경우, 설치를 시작하기 전에 분리하십시오.

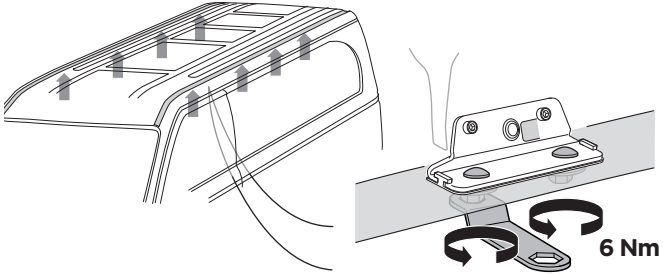
日本語 内側に屋根の裏張りがある場合は、取付手順を開始する前に取り外してください。

**A****B**

3



A



B

