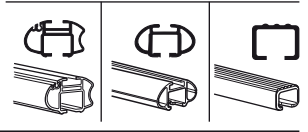
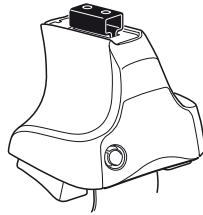


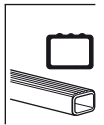
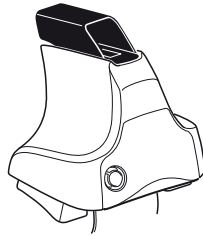
# Kit 1354

SEAT Altea, 5-dr Hatchback, 04–  
SEAT Toledo, 5-dr Hatchback, 05–

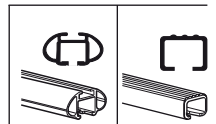
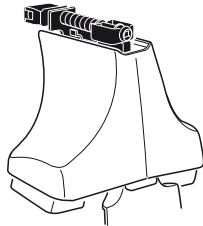
480R  
754



480



750



**Max.  
60 kg**  
**Max.  
132 lbs**

x1

x4

x4

x4

x4

**480R/754**

---

x1

x4

x4

x4

**480**

---

x1

x4

x4

**750**

x2 x2 x2 x4	x2	x2 x2 x4 x4	x2 x2	x2	x2

**664** x 1

**665** x 1

**301** x 2

**74** x 1

**75** x 1

**93** x 2

x 1

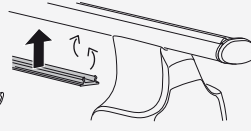
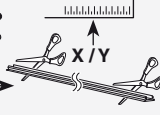
**Kit**



**3**



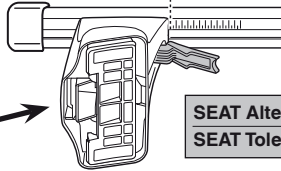
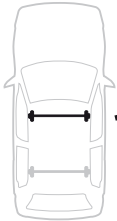
754



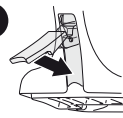
750



**1**

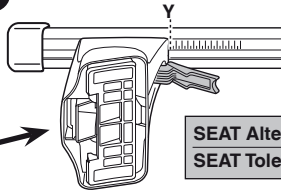


**2**

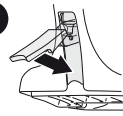


	X
SEAT Altea, 5-dr Hatchback, 04–	34,5
SEAT Toledo, 5-dr Hatchback, 05–	34

**1**



**2**



	Y
SEAT Altea, 5-dr Hatchback, 04–	30,5
SEAT Toledo, 5-dr Hatchback, 05–	30,5

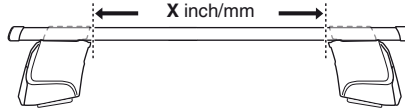
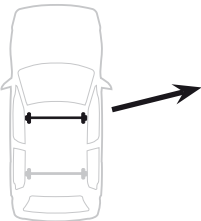


480R

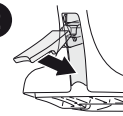


480

**1**

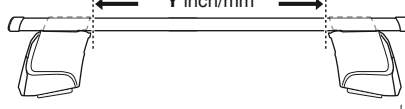
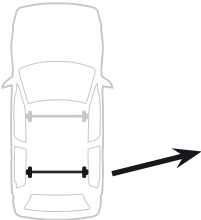


**2**

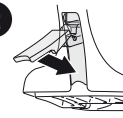


	X inch	X mm
SEAT Altea, 5-dr Hatchback, 04–	39 1/4"	996 mm
SEAT Toledo, 5-dr Hatchback, 05–	39"	991 mm

**1**



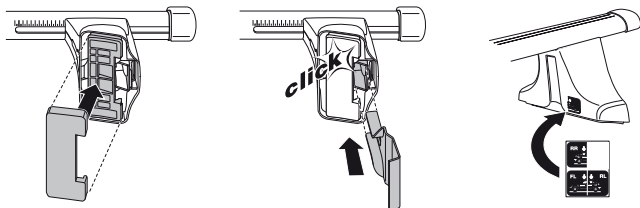
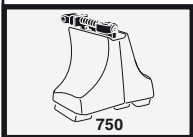
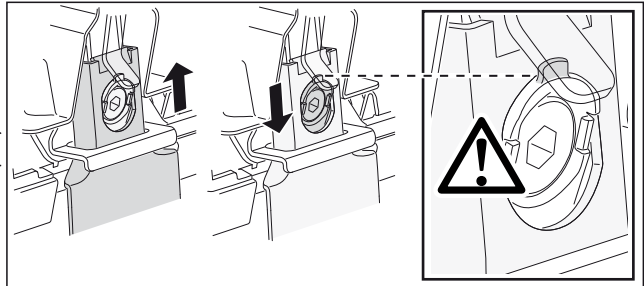
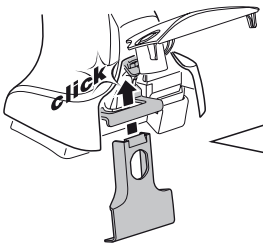
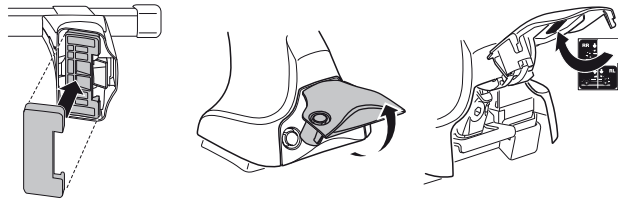
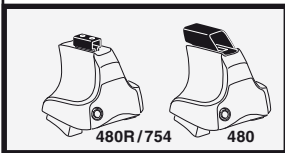
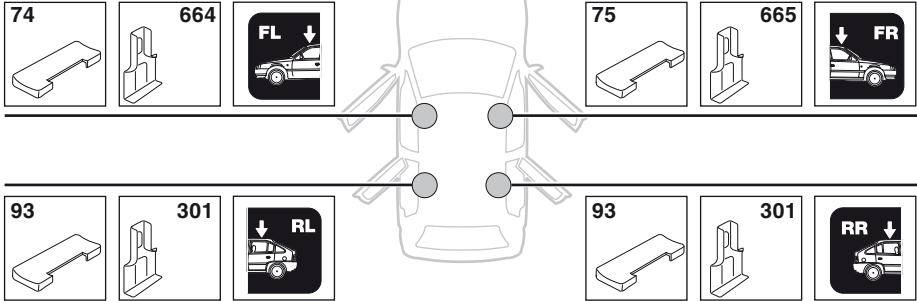
**2**



	Y inch	Y mm
SEAT Altea, 5-dr Hatchback, 04–	37 5/8"	956 mm
SEAT Toledo, 5-dr Hatchback, 05–	37 5/8"	956 mm

# 4

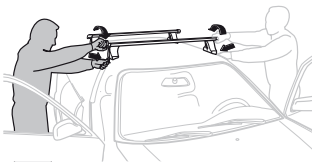
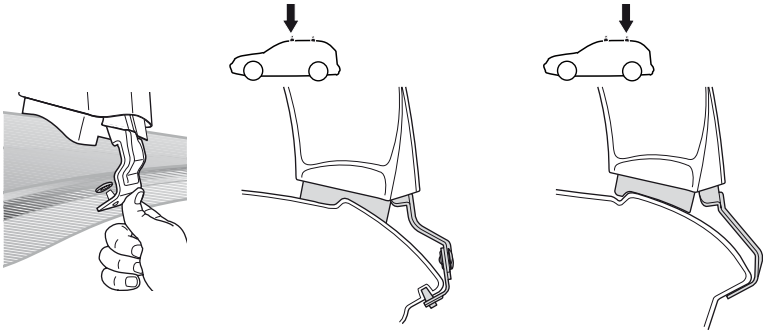
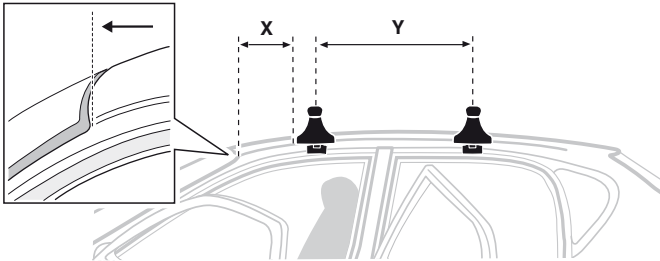
SEAT Altea, 5-dr Hatchback, 04–  
SEAT Toledo, 5-dr Hatchback, 05–



5



	X mm	Y mm	X inch	Y inch
SEAT Altea, 5-dr Hatchback, 04–	290 mm	700 mm	11 <sup>3</sup> / <sub>8</sub> ”	27 <sup>1</sup> / <sub>2</sub> ”
SEAT Toledo, 5-dr Hatchback, 05–	290 mm	700 mm	11 <sup>3</sup> / <sub>8</sub> ”	27 <sup>1</sup> / <sub>2</sub> ”



- |       |   |     |  |
|-------|---|-----|--|
| GB/US | Tighten alternately                                     | CZ  | Pokřetla bagážníka dokřečaj dokřečaj napřzemienne. |
| D     | Die Schrauben abwechselnd anziehen                      | SK  | Dotahujte striedavo                                |
| F     | Serrer alternativement chaque côté                      | SLO | Privijajte izmenično.                              |
| NL    | Afwisselend aan de linker- en de rechterkant aandraaien | HR  | Naizmjenično zategnite                             |
| I     | Alternare il serraggio delle viti                       | HU  | Egymástól függetlenül szorítandó                   |
| E     | Apretar alternativamente                                | GR  | Σφιγίγτε ενολιάξ                                   |
| PT    | Aperte alternadamente                                   | TR  | Dönüşümlü sıkın                                    |
| S     | Dra åt växelvis   | 中文  | 交替拧紧   |
| FIN   | Kierrä vuorotellen                                      | 한국어 | 변갈아 가며 조이십시오.                                      |
| EST   | Pinguldage vaheldumisi                                  | 日本語 | 交互に締め付けてください。                                      |
| LAT   | Pievelciet pamišus                                      | ไทย | ขันในแบบสลับ                                       |
| LIT   | Užsukinėkite pakaitomis                                 |     |  |
| PL    | Śruby dokřečaj napřzemienne                             |     |  |
| RU    | Затягивайте попеременно                                 |     |  |

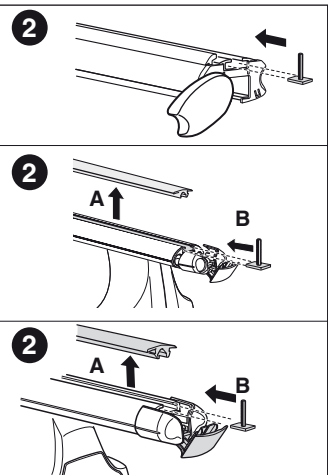
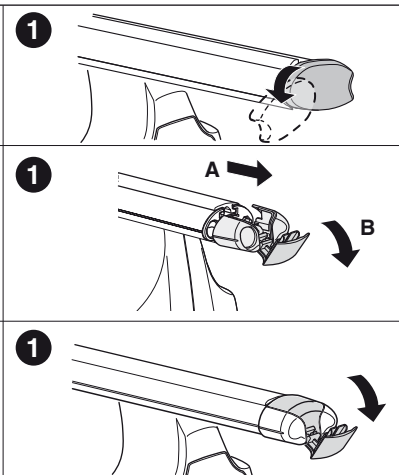
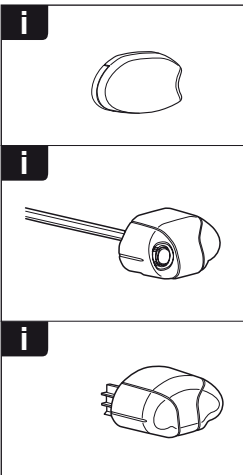
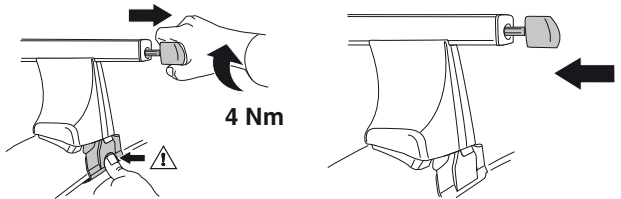
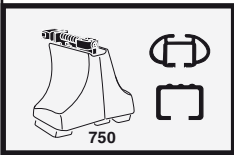
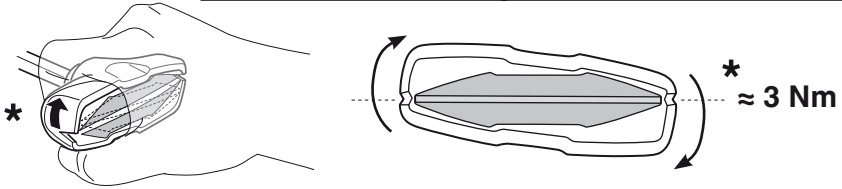
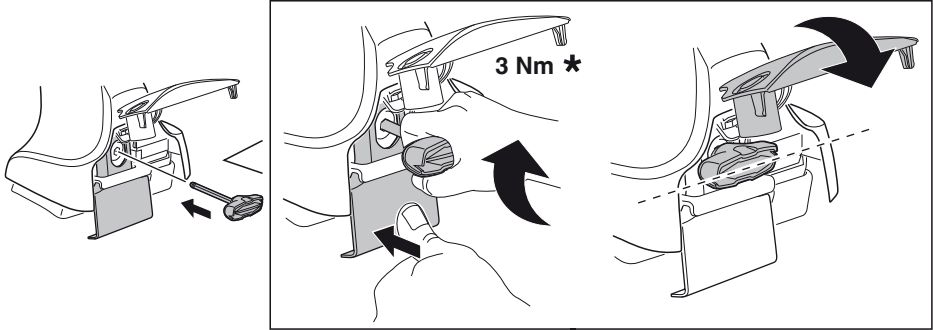
6

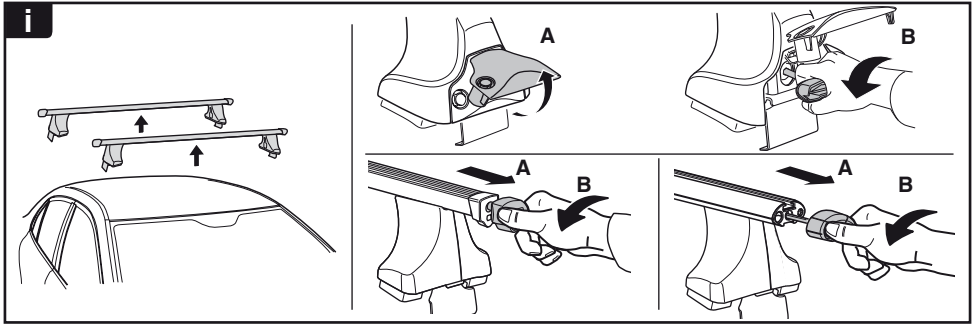


480R/754

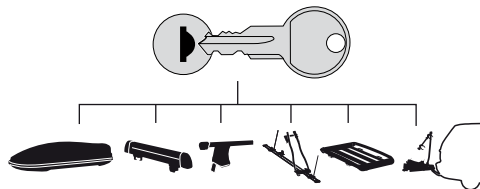


480

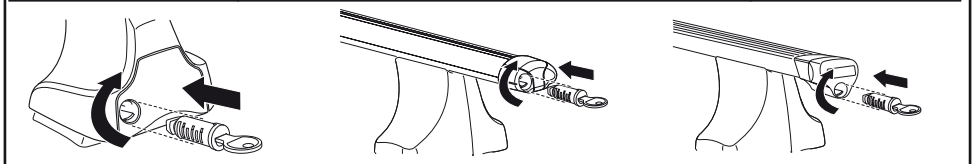




**THULE**  
SWEDEN  
**ONE  
KEY  
SYSTEM**



- 544 (x4)
- 596 (x6)
- 588 (x8)
- NA 510 (x10)
- EUR 452 (x12)
- ASIA



WW ▶ Thule Sweden AB, Box 69, 330 33 Hillerstorp, SWEDEN  
NA ▶ Thule Inc., 42 Silvermine Road, Seymour, Connecticut 06483, USA

info@thule.com  
customer.service@thule.com

www.thule.com